

B4HG0022SY

FITTING INSTRUCTIONS

HIGER ROAD BOSS 12.2M 57+1 14- DELUXE 4 BULLBAR

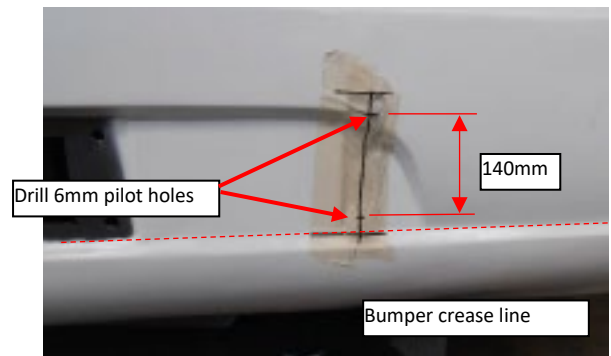
Step 1.

- Park the bus on level ground and apply the park brake.
- Raise the height of the vehicle to maximum to allow access to the spare wheel.
- Lower spare wheel and store safely.
- Carefully remove the Emergency Valve placard from the bumper and retain.



Step 2.

- Find the center of the bumper and mark out 435mm from the center to each side.
- From the bumper crease markup 20mm then up 140mm. Centre punch and drill a 6mm pilot hole for the hole saw.



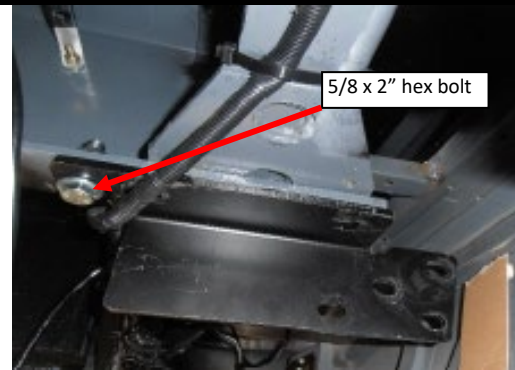
Step 3.

- Drill the 40mm holes in the front panel.
- Cut the slots in the front panel between the 2 40mm holes.
- File any sharp edges and paint any exposed metal to avoid corrosion.



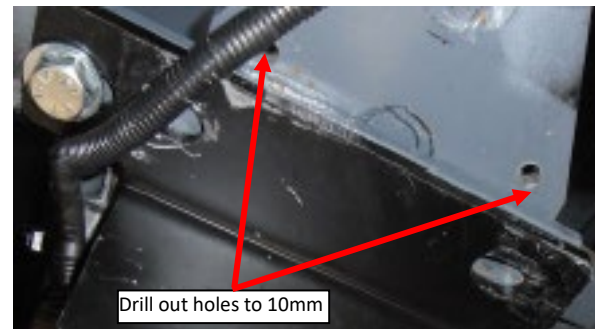
Step 4.

- Cut the cable ties retaining the wiring loom and temporarily position away from the chassis mount area. Remove the skid plate assemblies, discard all OE bolts.
- Fit chassis mounts to the underside of the chassis rails (pull mounts fully forward) and fasten using 5/8 x 2" hex bolts, flat washers and nyloc nuts.



Step 5.

- Locate the 8mm holes for the fastening of the spacer plates and drill out to 10mm.
- Paint any exposed metal to avoid corrosion.



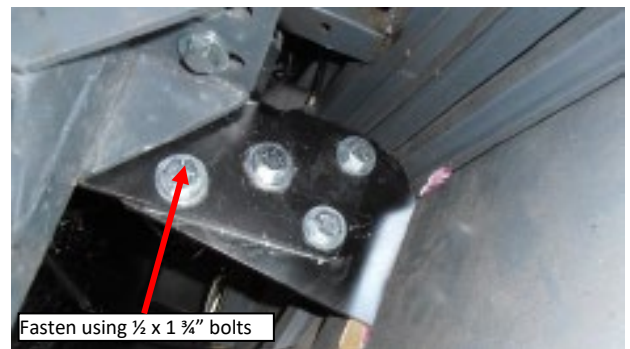
Step 6.

- Re-fit the skid plate assemblies using 1/2 x 2" hex bolts, flat washers and nyloc nuts.
- Fit two (2) spacer plates (1 OE & 1 supplied) between the chassis and mount on each side of the vehicle and fasten using 3/8 x 2" hex bolts, flat washers and nyloc nuts.



Step 7.

- Fit the intermediate mounts to the outside of chassis mounts and fasten using 1/2 x 1 3/4" hex bolts, flat washers and nyloc nuts. The mounts will protrude through the previously cut front panel.



Step 8.

- Patch in the supplied harnesses to the OE indicator / park light wiring using the supplied scotch locks.
- Patch in the supplied harnesses to the OE fog-light wiring the supplied scotch locks.
- Reposition the wiring loom in place and secure with cable ties.

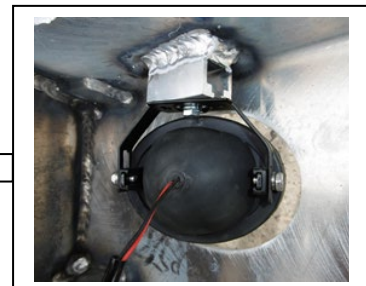


Step 9.

- Fit LED indicator / park lights into protection bar as per instructions supplied with the LED indicator kit. NOTE: Ensure park light is to top.
- Attach bumper lights to protection bar. Place M6 x 20 bolts, spring washers (supplied) through light mount from inside and attach nut to top. Slide assembly into light mount in Protection bar and centralize light to hole. TIGHTEN FIRM ONLY.
- Place the pinch mold to the edge of the tow pin access hole and the upper rear edge of the Bullbar channel.
- Position the Emergency Valve placard central to the channel and 25mm away from the bumper light, fasten using 6g x 5/8" S/S screws supplied.



Indicator / Park Light



Bumper Light

Step 10.

- Fit the Bullbar to the chassis mount.
- Align the Bullbar with the vehicle and fasten using 1/2 x 1 3/4" hex bolts, H/D Flat washers and nyloc nuts. Tighten all bolts, plug in lights and check operation.
- Reposition spare wheel and secure.





**Lighter
Stronger
Better!**

A: 29 Snook St Clontarf QLD 4019
A: PO Box 122 Margate QLD 4019
P: 07 3897 5700
F: 07 3811 6480
E: info@ecb.com.au
W: ecb.com.au
W: customalloy.com.au



FITTING KIT

1 – Pair Chassis Mounts
2 – Intermediate Mounts
2 – Aluminium Spacers
1 – Pair Blank Indicator / Park Lights (ICLED104BLK)
1 – Pair Bumper Lights (ICLED2020BL)
10 – Scotch Locks
1 – 600mm long 6mm Clip lock Trim
1 – 2600mm long 6mm Clip lock trim
10 – Cable ties
2 – 6g x 5/8" Stainless steel pan head Phillips Drive Screws
2 – M6 x 20mm Hex Bolts (to secure bumper lights)
2 – M6 Nyloc nuts (to secure bumper lights)
2 – M6 Spring Washers (to secure bumper lights)
2 – 5/8 x 2" Hex Bolts
2 – 5/8" Nyloc Nuts
4 – 5/8" Flat Washers
4 – 1/2 x 2" Hex Bolts
4 – 1/2" Nyloc Nuts
8 – 1/2" H/D Flat Washers
4 – 3/8" x 2" Hex Bolts
4 – 3/8" Nyloc Nuts
8 – 3/8" H/D Flat Washers
14 – 1/2 x 1 3/4" Hex Bolts
14 – 1/2" Nyloc Nuts
28 – 1/2" H/D Flat Washers

DESPATCH CHECKLIST

B4HG0022SY

Work Order #	
Finish:	
Transport:	
Due Date:	

- | | | | |
|----|-------|---|--|
| BK | _____ | 1 | Pair of Chassis Mounts – Boxed with Bolt Kit |
| BK | _____ | 2 | Intermediate Mounts – Boxed with Bolt Kit |
| BK | _____ | 1 | Bolt Kit – Including Lights – Boxed with Mounts |
| OC | _____ | 2 | Plastic Bumper Light Surrounds |
| OC | _____ | 1 | Boxed Bolt Kit / Mounting Brackets |
| WR | _____ | 2 | Bumper Light Surrounds – Fitted to bar |
| WR | _____ | 1 | Boxed Bolt Kit / Mounting Brackets – Place in Carton with Bar |



Is this product “the best it can be” Yes _____ / _____
Wrapper’s initials / Checker initials
 If NO fix before continuing

All parts checked and completed by:

Nut and bolts: _____ Date ___ / ___ / ___

Order control: _____ Date ___ / ___ / ___

Final wrap check: _____ Date ___ / ___ / ___



Chassis Mount – In Box



Intermediate Mount – In Box



Aluminum Spacer Plates – In Kit